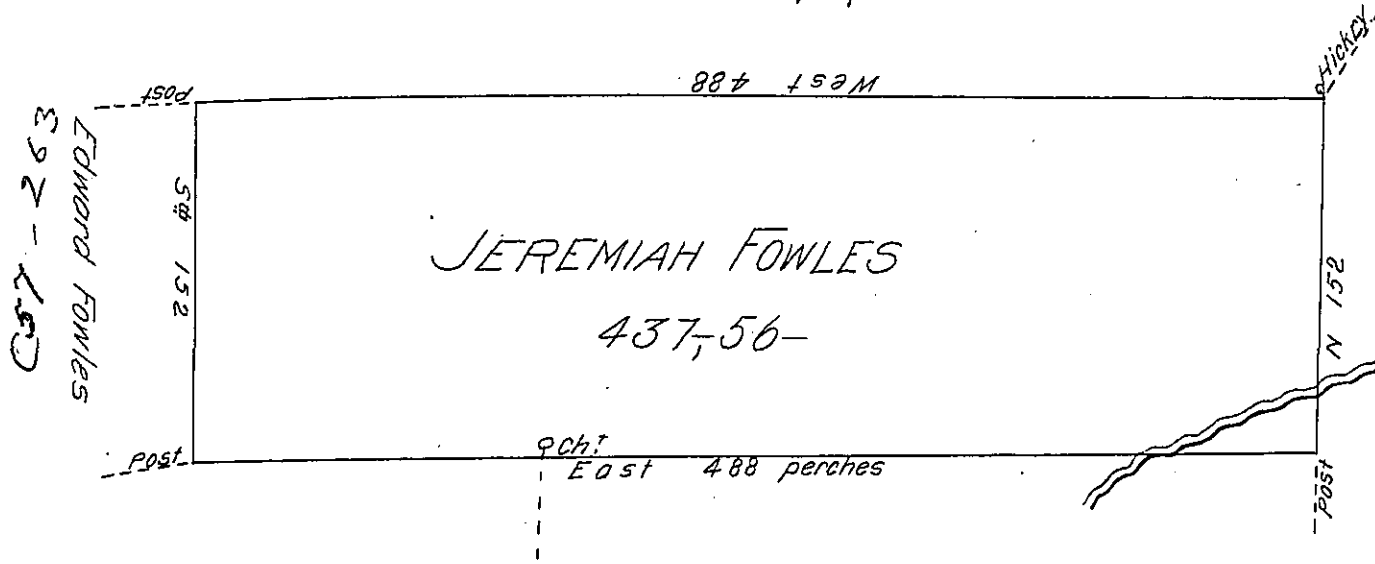


Wm Clark  
D-27-98



Abram Bigelow

Saml Fowles

By Virtue of a Warr<sup>t</sup> dated 3<sup>d</sup> of Septem<sup>r</sup> 1792 Surveyed the 10<sup>th</sup> day of November 1793 Unto Jeremiah Fowles the above described tract of Four hundred and thirty seven Acres and 56 perches of Land & Allowance situated on a stream near the mouth two miles below Mahopery in Luzerne County

To Daniel Brodhead Esq<sup>r</sup>  
Surv<sup>r</sup> Gen<sup>l</sup> of Pensylv<sup>a</sup>

By W<sup>m</sup> Montgomery D.S.<sup>r</sup>

N-13

IN TESTIMONY that the above is a copy of the original remaining on file in the Department of Internal Affairs of Pennsylvania, made conformably to an Act of Assembly approved the 16th day of February, 1833, I have hereunto set my Hand and caused the Seal of said Department to be affixed at Harrisburg, this twenty eighth day of November 1904

*Isaac R. Benson*  
Secretary of Internal Affairs.